

**Strengthening school-HE partnership
across London in collaboration with
London's students' unions**

**John Hall, Head of SHELL Unit
London Higher, Senate House**

ULU at RHUL, 9 July 2010



Q1: What is SHELL?

- SHELL = School-HE Links in London
- Part of London Challenge (at DCSF, now DfE) 2008-11
- Works with other partners (eg Aimhigher)
- Chaired by Prof Malcolm Gillies and Prof David Woods

Tackles two pledges from the London Challenge vision, that by 2011:

- Every maintained secondary school in London will have a partnership with an HEI (or several)
- A higher proportion of young Londoners will go on to HE, including the more competitive universities



Q2: Demand – What do prospective students and their teachers value?

In school

- Mentoring, including the 'HE experience' student finance, living arrangements, careers prospects ...
- Interactive sessions on subjects and about applying to HE

In the HEI

- Campus visits and meeting/shadowing students (+ parents?)
- Meeting lecturers in subject areas and masterclasses, revision sessions
- Summer schools



Q3: Response – What does SHELL do?

Useful products/tools:

- Online SHELL Directory to help London's secondary schools make contact with London HEIs
- To be followed by hard copy version for distribution to schools in September

Your school's at-a-glance SHELL Guide to contacting London universities

The alphabetical order of the HEIs follows as closely as possible to the UCAS listing

	Birkbeck University	Central School of Speech & Drama*	City University London	Conservatoire for Dance and Music	Courtauld Institute of Art
Client groups					
Primary Schools	•	•	•	•	•
Key Stage 3 (Years 7-9)	•	•	•	•	•
Key Stage 4 (Years 10-11)	•	•	•	•	•
Key Stage 5 (Years 12-13)	•	•	•	•	•
Parents/careers	•	•	•	•	•
Under-represented groups/looked after children	•	•	•	•	•
Local authorities/higher/4-19 partnerships	•	•	•	•	•
Activities on offer to schools	•	•	•	•	•
Visits in to schools by HEI	•	•	•	•	•
School visits to the HEI	•	•	•	•	•
Mentoring for schools	•	•	•	•	•
UCAS application for school staff	•	•	•	•	•
CPD activities for university tasters	•	•	•	•	•
Taster sessions (introduction to university tasters)	•	•	•	•	•
Masterclasses/subject tasters	•	•	•	•	•
Summer schools	•	•	•	•	•
Subject areas taught at HEI					
Business/Admin studies	•	•	•	•	•
Health, Dentistry & Medicine	•	•	•	•	•
Humanities & Social/Economic/Public policy	•	•	•	•	•
Media, Creative & Performing Arts, Design	•	•	•	•	•
Modern Foreign Languages	•	•	•	•	•
Science, Technology, Engineering, Maths	•	•	•	•	•
Sports & Leisure	•	•	•	•	•
Admissions Office Telephone	01895 265265	020 7559 3901	020 7040 5060	020 7874 7080	020 7848 2645
School/HEI Units Contact Details	01895 265265 www.birkbeck.ac.uk	020 7559 3901 www.csd.ac.uk	020 7040 5060 www.city.ac.uk	020 7874 7080 www.cda.ac.uk	020 7848 2645 www.cda.ac.uk



SHELL Menu

For schools: Directory of university contacts

What's in it for me?

News and Events

Press Releases

How we will help

FAQs

Case Studies

For more information on SHELL please contact:

E

SHELL@londonhigher.ac.uk
T 020 7664 4840

Department for Education



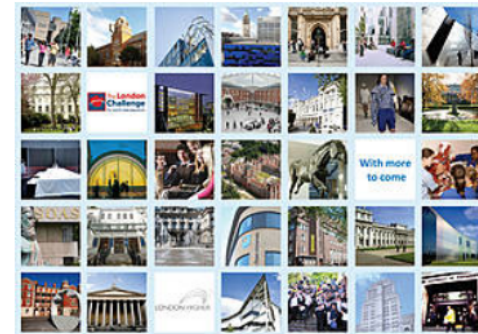
How can schools make contact with a university in London?

This SHELL Directory shows how you can make contact with London's 40+ universities and higher education colleges.

We should like to hear if you have any suggestions about how we can improve the usefulness of the entries for your purposes.

Please send your ideas to us at [SHELL](#).

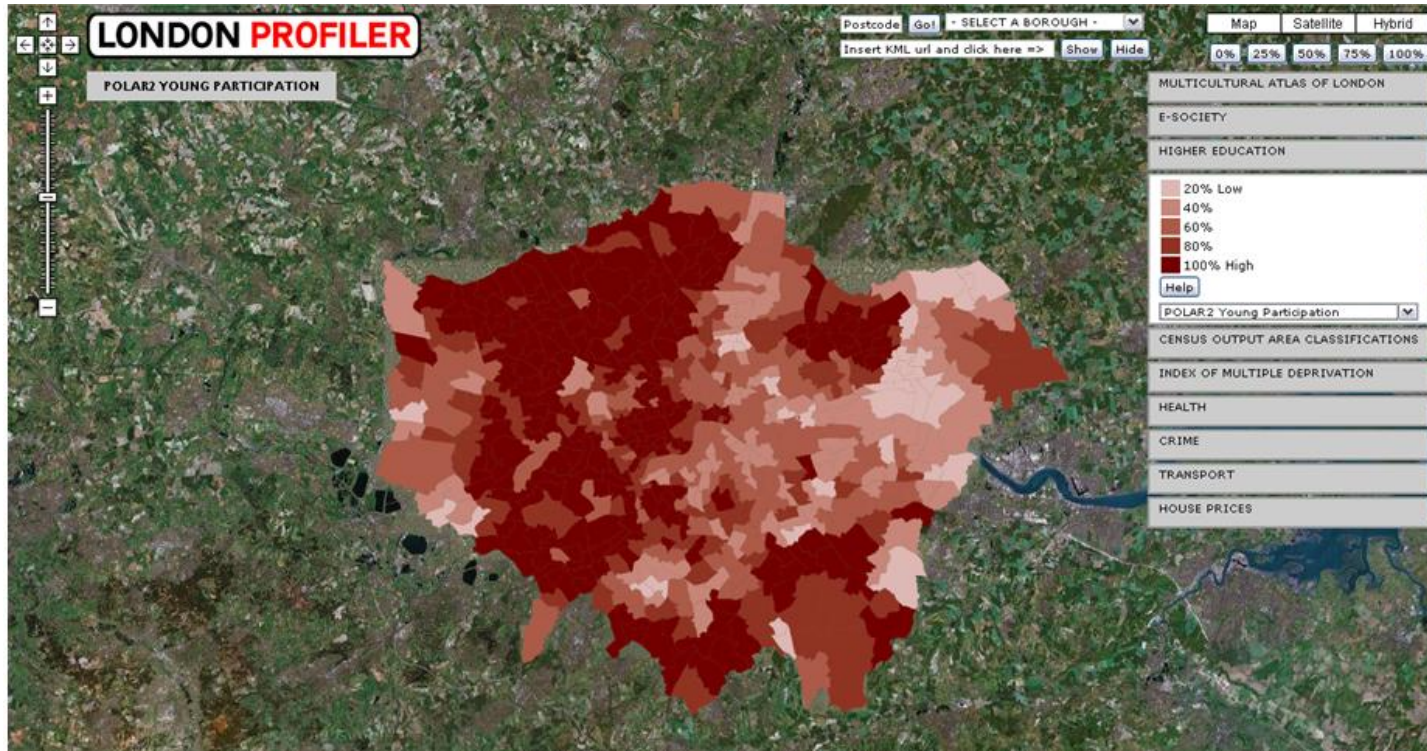
- Brunel University
- Central School of Speech & Drama, University of London
- City University London
- Conservatoire for Dance and Drama
- Courtauld Institute of Art, University of London
- University of East London
- University of Greenwich
- Goldsmiths, University of London
- Heythrop College, University of London
- Imperial College London
- King's College London, University of London
- Kingston University London
- London Metropolitan University
- London School of Economics and Political Science (LSE)
- London School of Hygiene and Tropical Medicine, University of London
- London South Bank University
- Middlesex University
- The Open University in London
- Queen Mary, University of London



The SHELL online directory assists making contact with London HEIs (www.londonhigher.ac.uk/shelldirectory.html)



Q4: *Where is the greatest challenge?*



Areas of lowest ‘young participation’ are shown in the palest shades (eastwards ...)



Q5: How can your union contribute?

- Engage with the London Higher / SHELL contact in your own institution (use the SHELL Directory)
- Also 'navigate' between WP, outreach and volunteering
- Engage with your HEI's Aimhigher network (there are 4)



Q6: Next steps for students' unions

Action 1: Pledge your union's support for SHELL ambitions

- Exchange ideas with your union officers and staff, and the relevant parts of your college (navigation again)

Action 2: Tell the SHELL team how you're getting on

- Get in touch before the new session starts to tell us about your progress and plans – and we can share ideas (e-group)



2010 context: the wider challenges

- Momentum of widening participation gains under threat (fees; places; employability)?
- Students' unions have vital role in this through governing bodies and NUS national campaigns
- New watchword is 'collaboration' – to make common cause and share services
- ***In sum: Students*** can be a strong proselytizing force for school engagement



How to contact the SHELL Team

Naz Khan:

naz.khan@londonhigher.ac.uk

John Hall:

john.hall@londonhigher.ac.uk

www.londonhigher.ac.uk/SHELL



London's Aimhigher partnership managers

ASPIRE (South East London): Gwen Evans

g.evans@greenwich.ac.uk

London East Thames Gateway: Susan Mueller

s.mueller@qmul.ac.uk

Aimhigher South London: Kevin Maskell

k.maskell@kingston.ac.uk

WECAN (West, Central & North): Dr Graeme Atherton

g.atherton@westminster.ac.uk

(see: www.aimhigher.ac.uk/practitioner/who_s_who/area_contacts/london.cfm)



Notes

