

LONDON HIGHER FACTSHEET 2014



HE FINANCE PLUS, 2012/13

- During 2012/13, 164 UK higher education institutions (HEIs) had a total income of £29,144 million, an increase of £1,222 million from the previous year.
- HEIs in London had a combined income of £6,190 million, equivalent to 21% of the UK total.
- London HEIs obtained 41% of income from tuition fees and education contracts; 22% from funding body grants; 19% from research awards, 17% from other sources, and 1% from endowments and investments.
- Income from tuition fees and education contracts amounted to £2,529 million with 38%, or £951 million, from non-EU students, and 37% from full time UK and other EU undergraduates.
- UK sources provided £901 million, including £334 million (37% of UK sources) from UK Research Councils; £306 million (34%) from UK charities, and £64 million (7%) from UK industry.
- London HEIs gained £304 million from non-UK sources, with £136 million (45%) from EU government bodies; £42 million (14%) from non-EU charities, and £5 million (2%) from EU-based charities.
- Various other sources contributed £1,033 million, of which £362 million (35%) came from residences, catering and conference operations, and £105 million (10%) from health and hospital authorities
- Income from intellectual property rights returned £19 million (2% of other income) which was 19 times smaller than income from residences and catering.

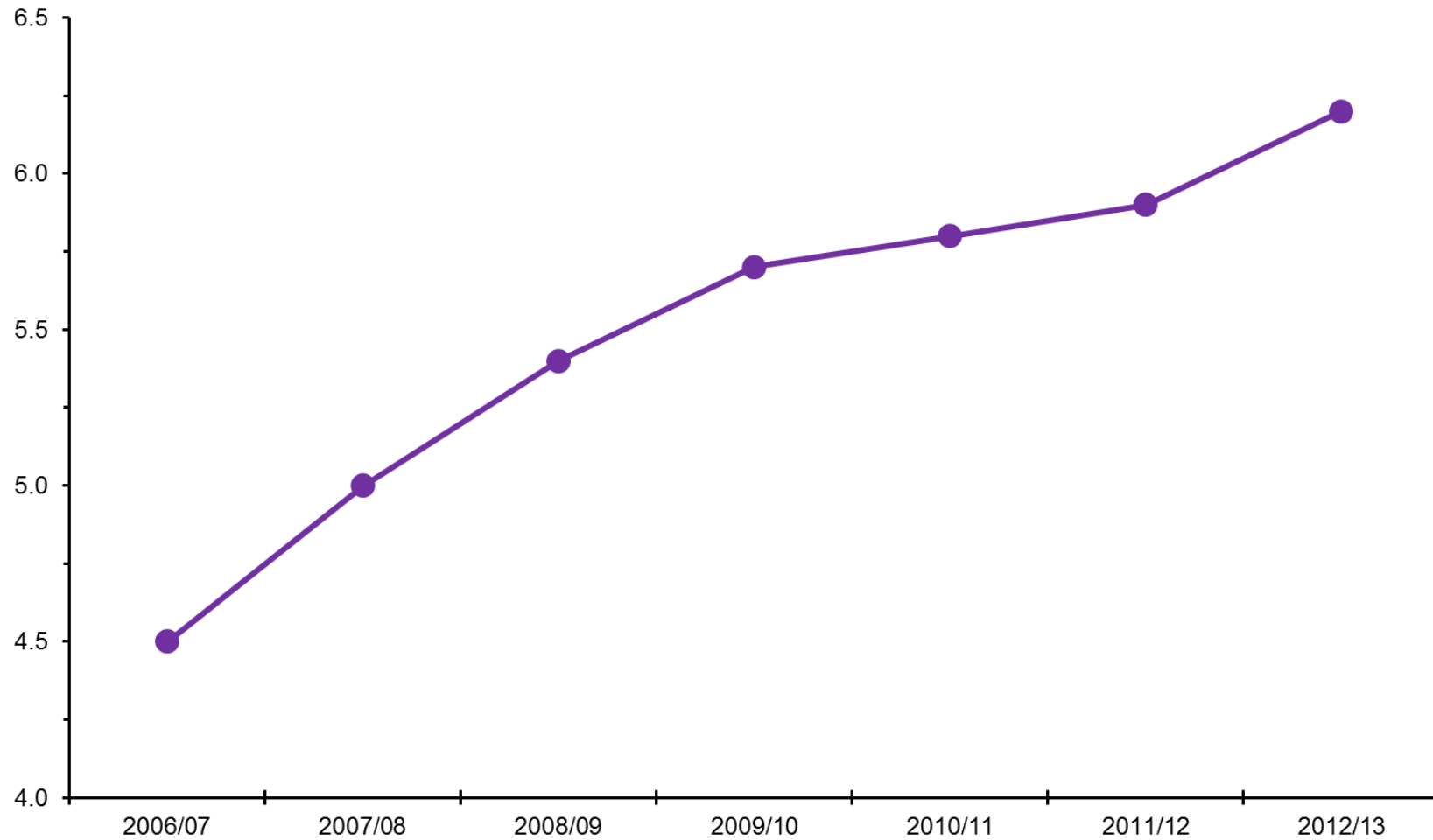
Source: [HE Finance Plus, 2012/13. Higher Education Statistics Agency Limited, March 2014.](#)

- Reproduced by permission of the Higher Education Statistics Agency Limited (HESA). HESA cannot accept responsibility for any inference or conclusions derived from the data by third parties.
- All figures refer to 39 of 40 HEFCE-supported HEIs in London excluding The Open University, London Regional Centre (data not available).
- Contact Paresh Shah at paresh.shah@londonhigher.ac.uk for any enquiries or comments on this Factsheet.
- **ALL MEDIA ENQUIRIES SHOULD BE ADDRESSED TO HESA AND NOT LONDON HIGHER.**

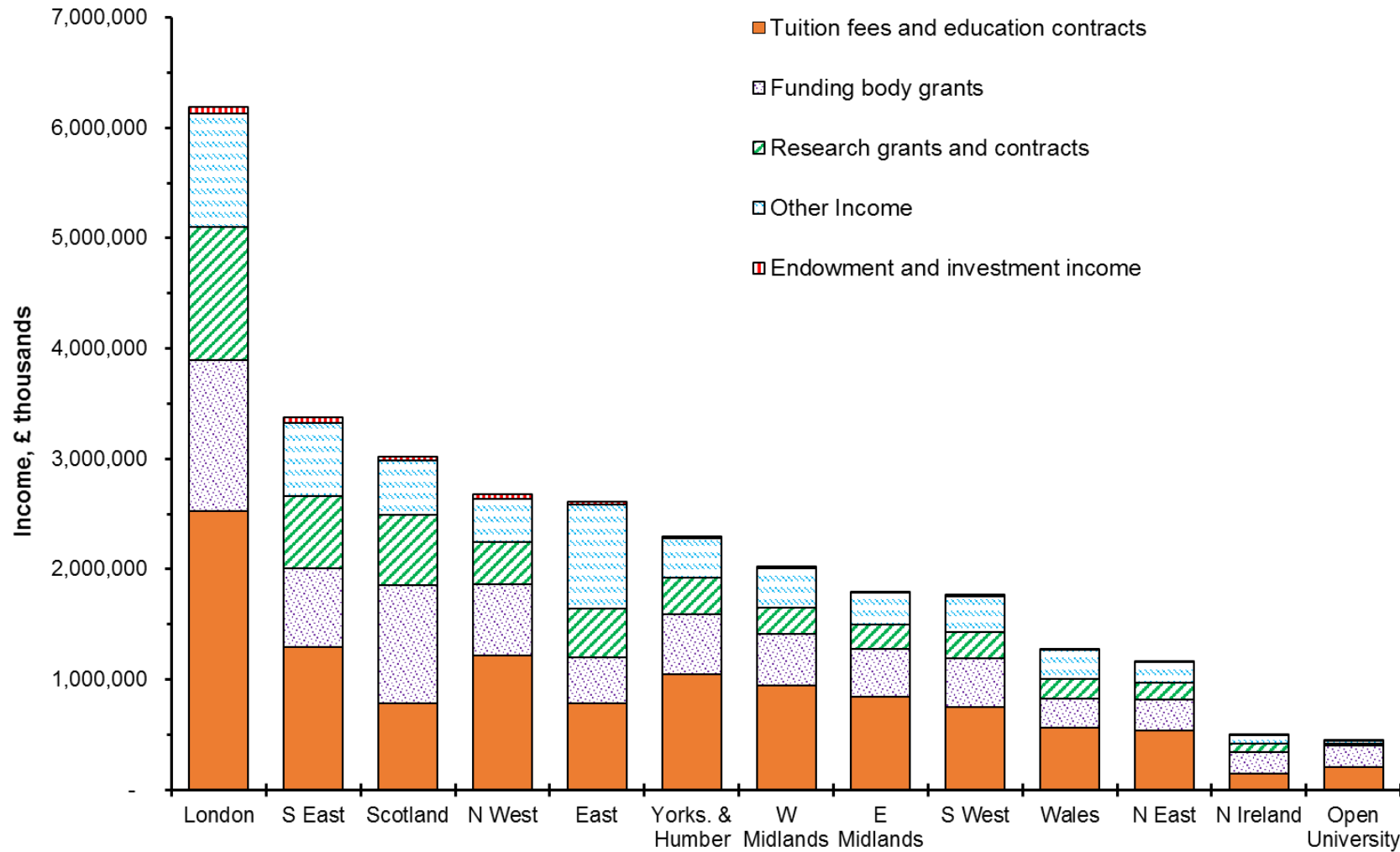
HE FINANCE PLUS, 2012/13

Total income for HEIs in London

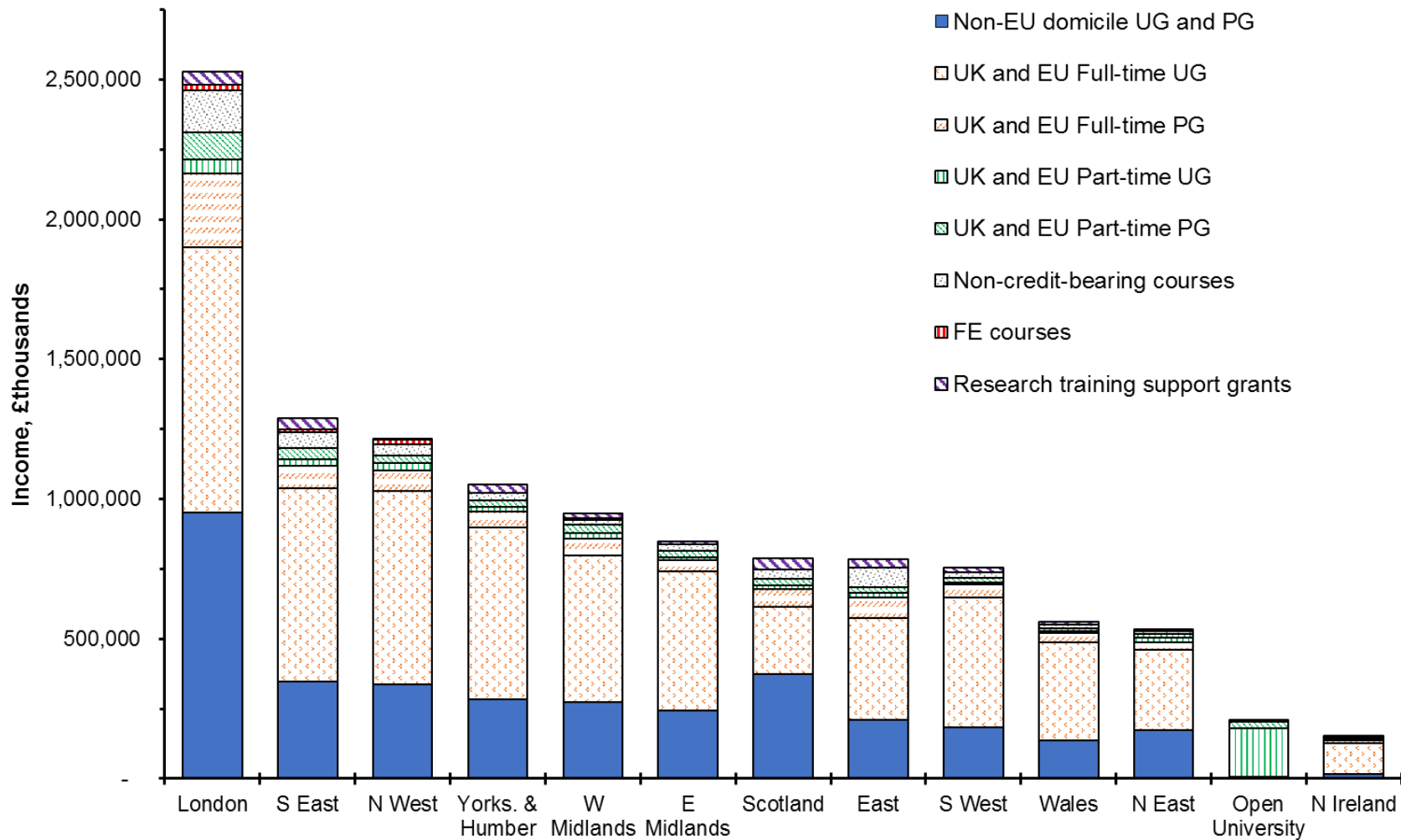
Amount, £ billion



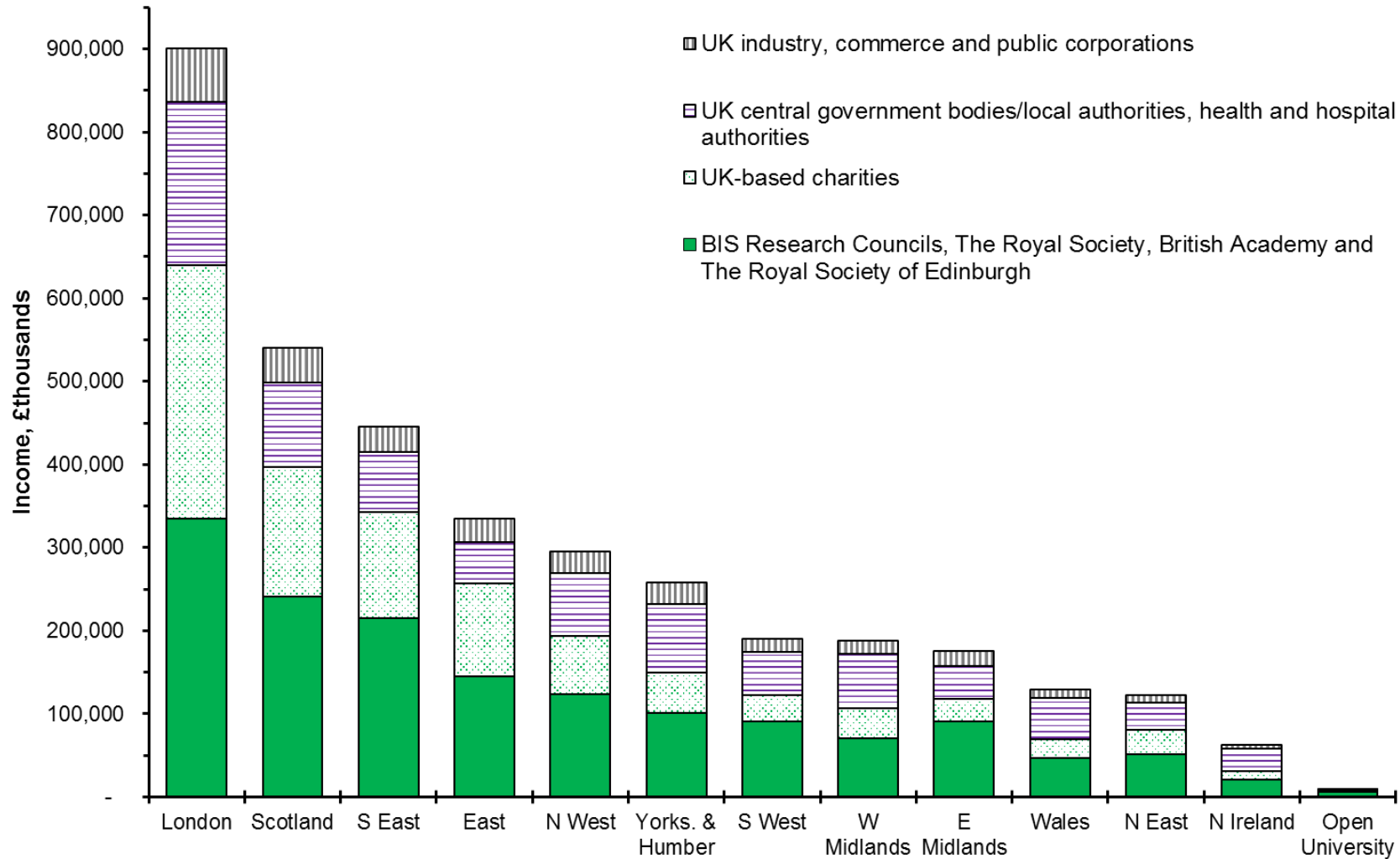
Income Sources by Region, 2012/13



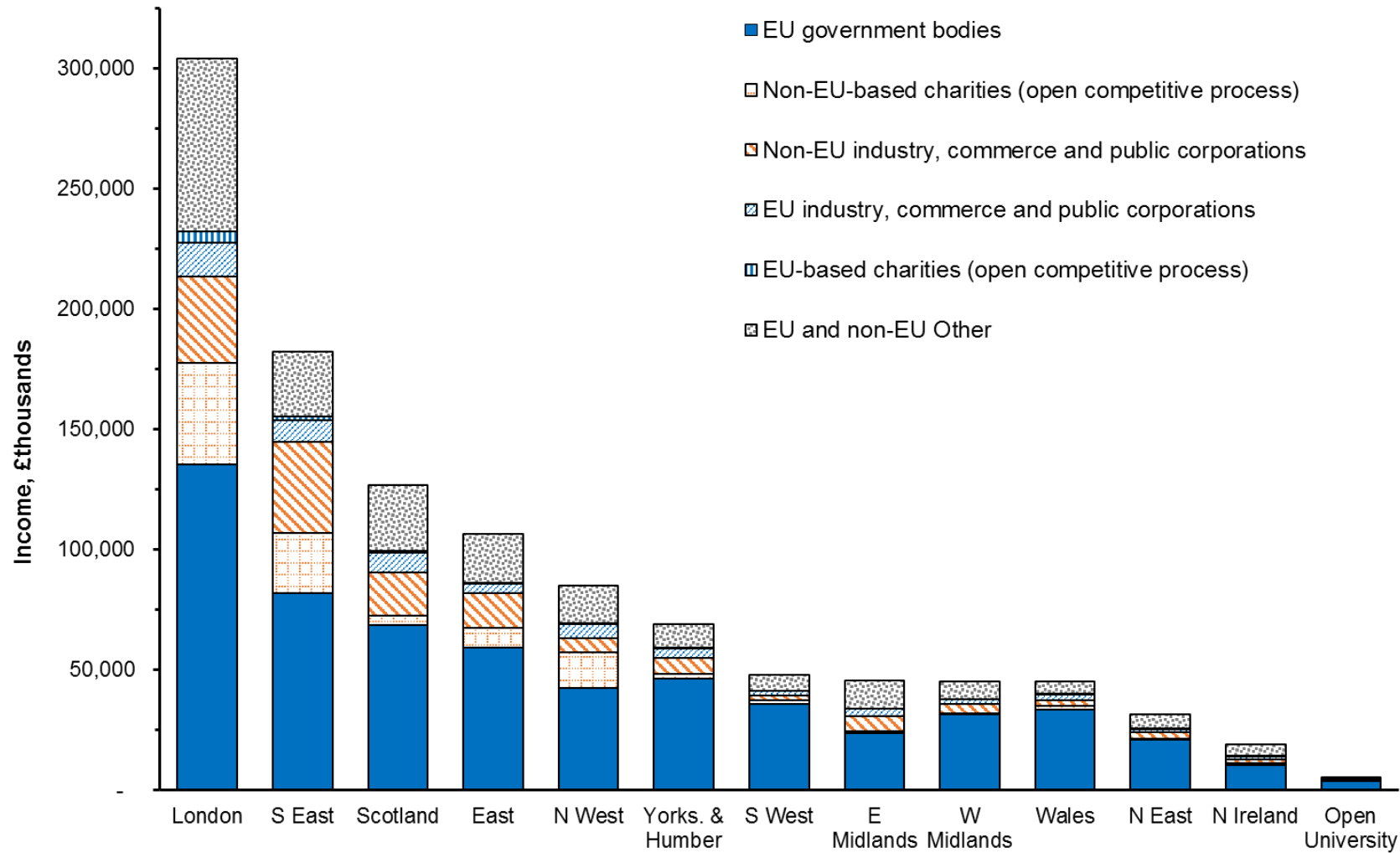
Income from Tuition Fees and Education Contracts, 2012/13



Income from UK sources, 2012/13



Income from non-UK sources, 2012/13



Income from Other Sources, 2012/13

