

LONDON HIGHER FACTSHEET 2015

HIGHER EDUCATION STUDENTS IN LONDON



- HESA student data from 2009/10 to 2013/14 has been summarised by level and mode of study and by domicile.
- HE institutions in London were grouped by average student entry tariff points, based on a HEFCE classification, and in 2013/14 the numbers were:
 - high tariff – five institutions; medium tariff – six institutions; low tariff – seven institutions;
 - Specialist providers were subdivided into specialist arts (11) and specialist others (11).
- Student numbers at HE institutions in London peaked during the 2009/10 academic year with over 417,000 students.
- Trends in the HE population for undergraduates include:
 - decreases in part-time study especially at low tariff providers
 - decreases in UK-domiciled students at low tariff and specialist other providers
 - slight decreases in UK students at medium tariff providers especially from 2012/13 (increased tuition fees)
 - slight increases in Non EU students at high tariff and specialist arts providers
- Trends in the HE population for postgraduates include:
 - decreases at low tariff providers
 - decreases in numbers for all domiciles at low tariff providers but increases at high tariff providers
 - slight decreases for UK students at medium tariff and specialist other providers especially from 2012/13
 - slight decreases for UK students at specialist arts providers but increases in non-UK students

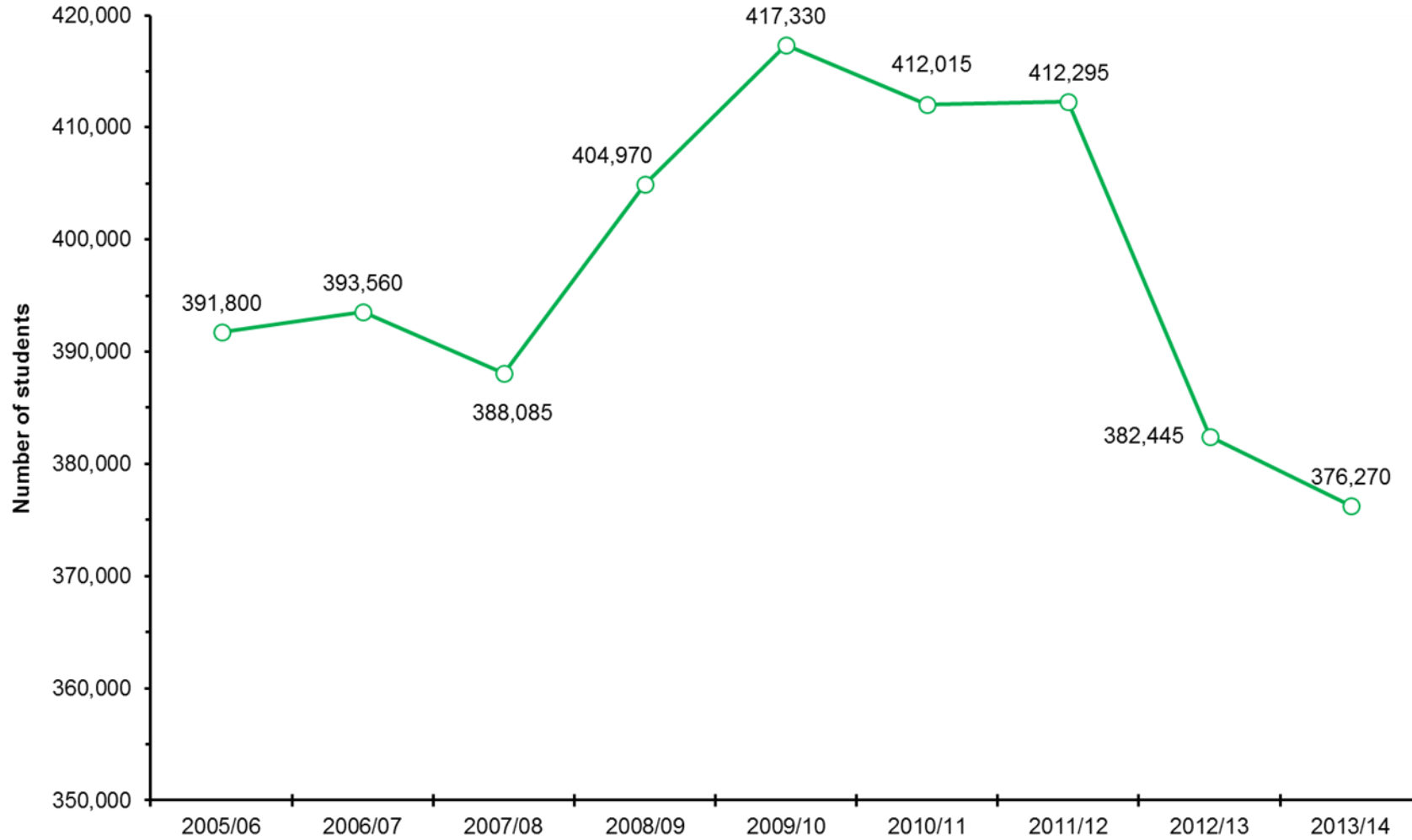
Notes:

- Information for charts based on data collected by the [Higher Education Statistics Agency Limited \(HESA\)](#). HESA cannot accept responsibility for any inference or conclusions derived from the data by third parties.
- All figures from 2012/13 refer to 40 of 41 HE providers in Greater London excluding The Open University in London (data not available). Prior to this data refer to 41 of 42 HE providers excluding The Open University in London.

Contact: Paresh Shah E paresh.shah@londonhigher.ac.uk. **ALL MEDIA ENQUIRIES SHOULD BE DIRECTED TO HESA.**

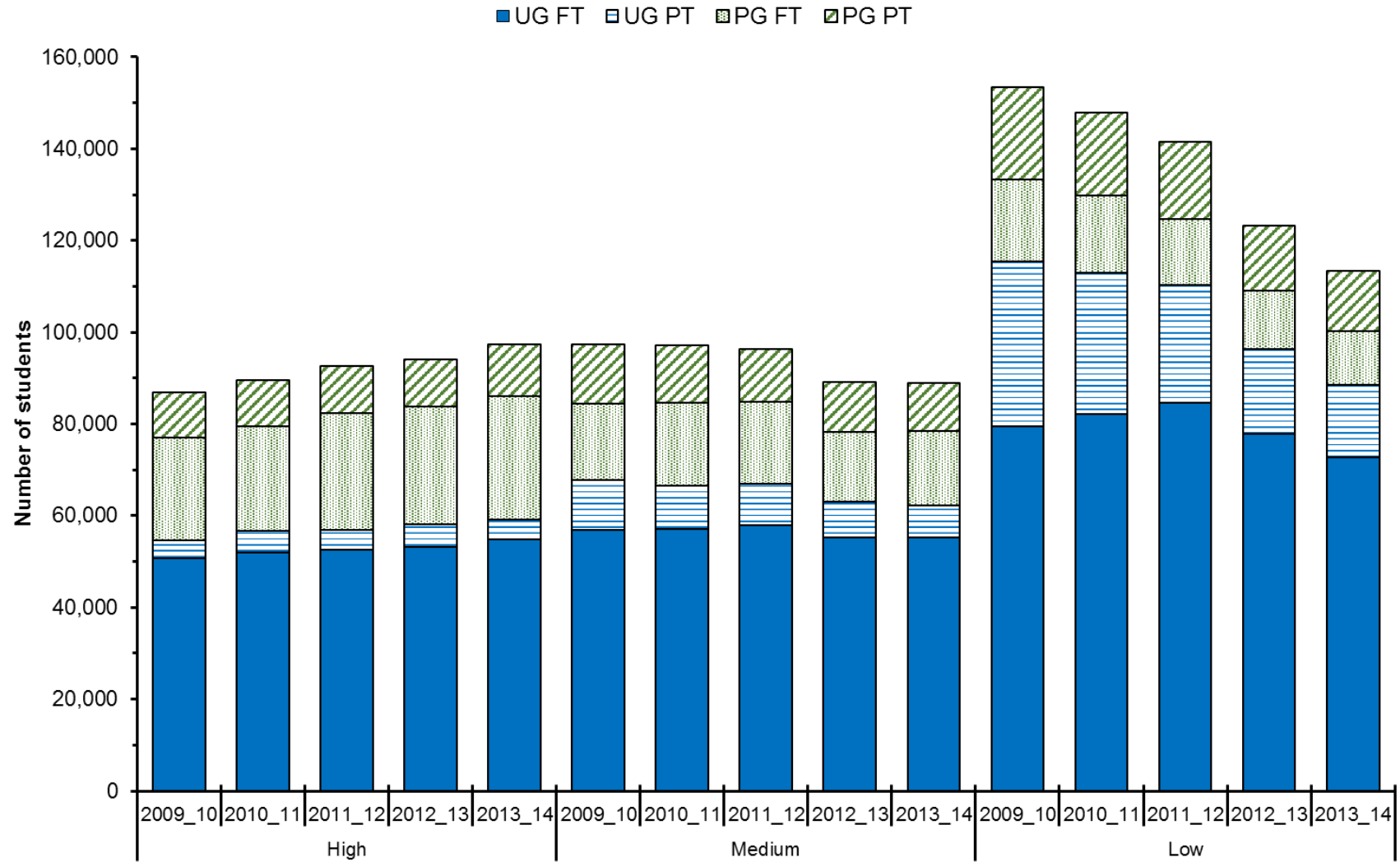
LONDON HIGHER FACTSHEET 2015
HIGHER EDUCATION STUDENTS IN LONDON

HE students in London, 2005 to 2014
(excl. writing up, sabbatical and FE students)



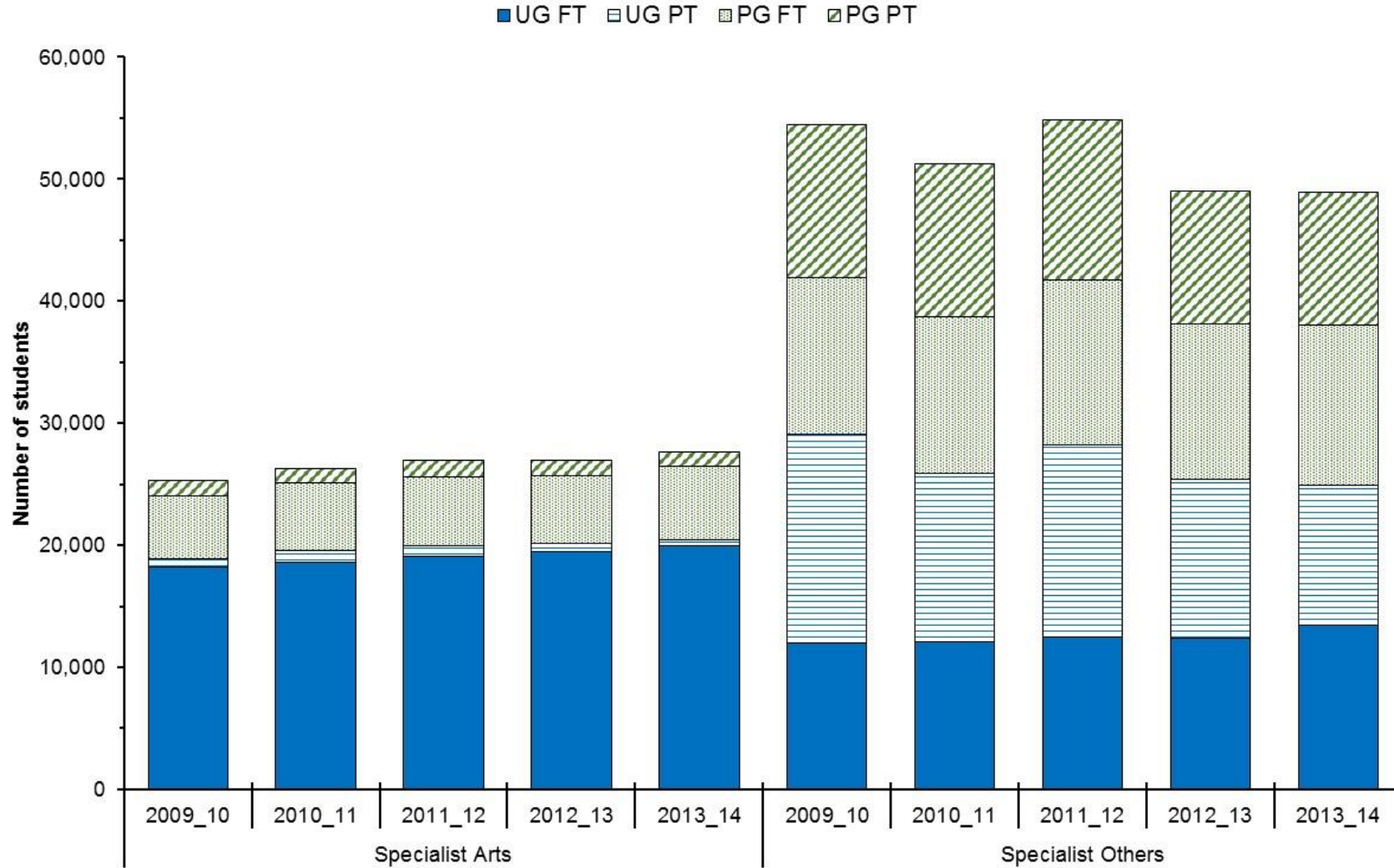
LONDON HIGHER FACTSHEET 2015
HIGHER EDUCATION STUDENTS IN LONDON

HE students in London by level and mode of study



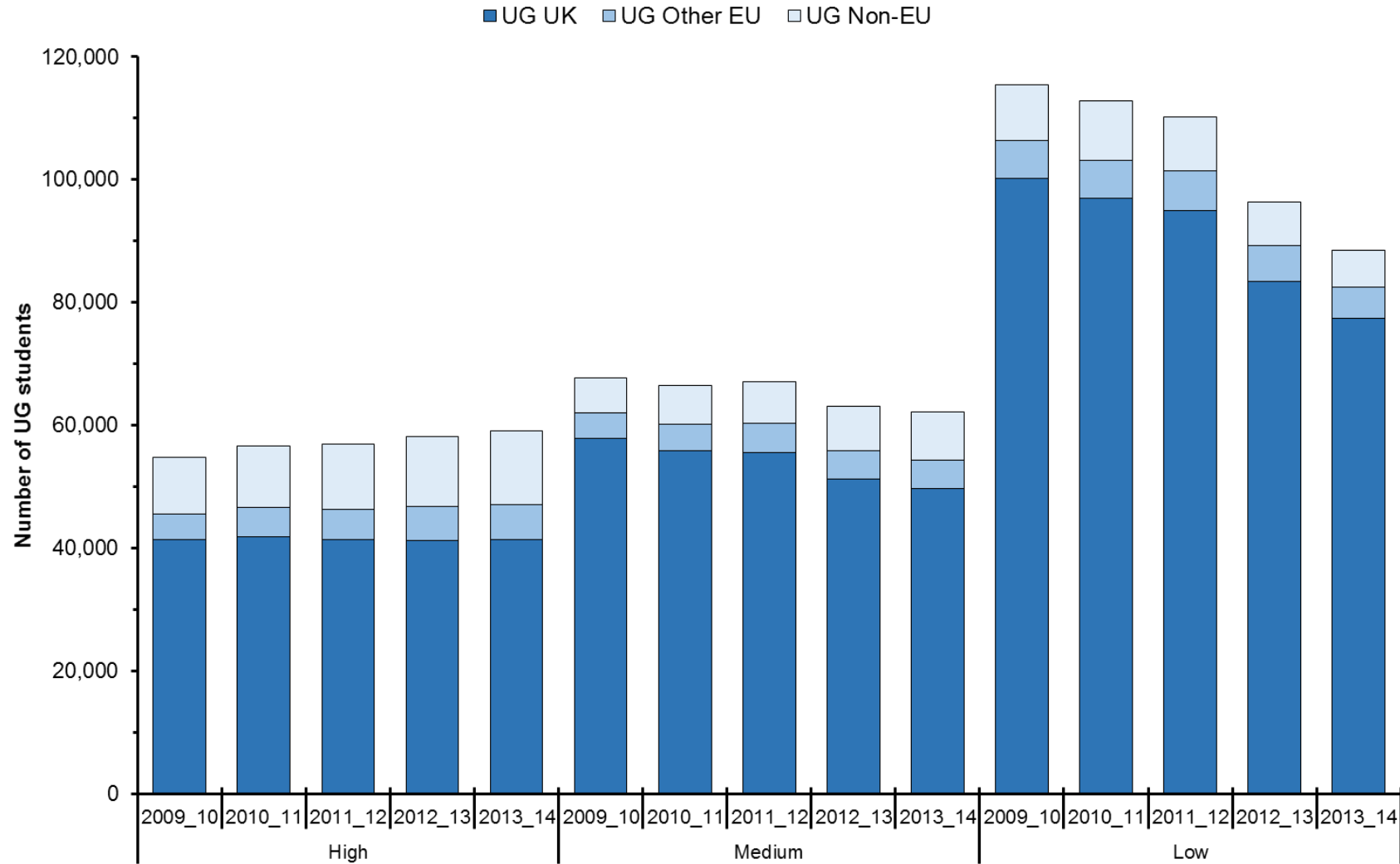
LONDON HIGHER FACTSHEET 2015
HIGHER EDUCATION STUDENTS IN LONDON

HE students in London at specialist HEIs by level and mode



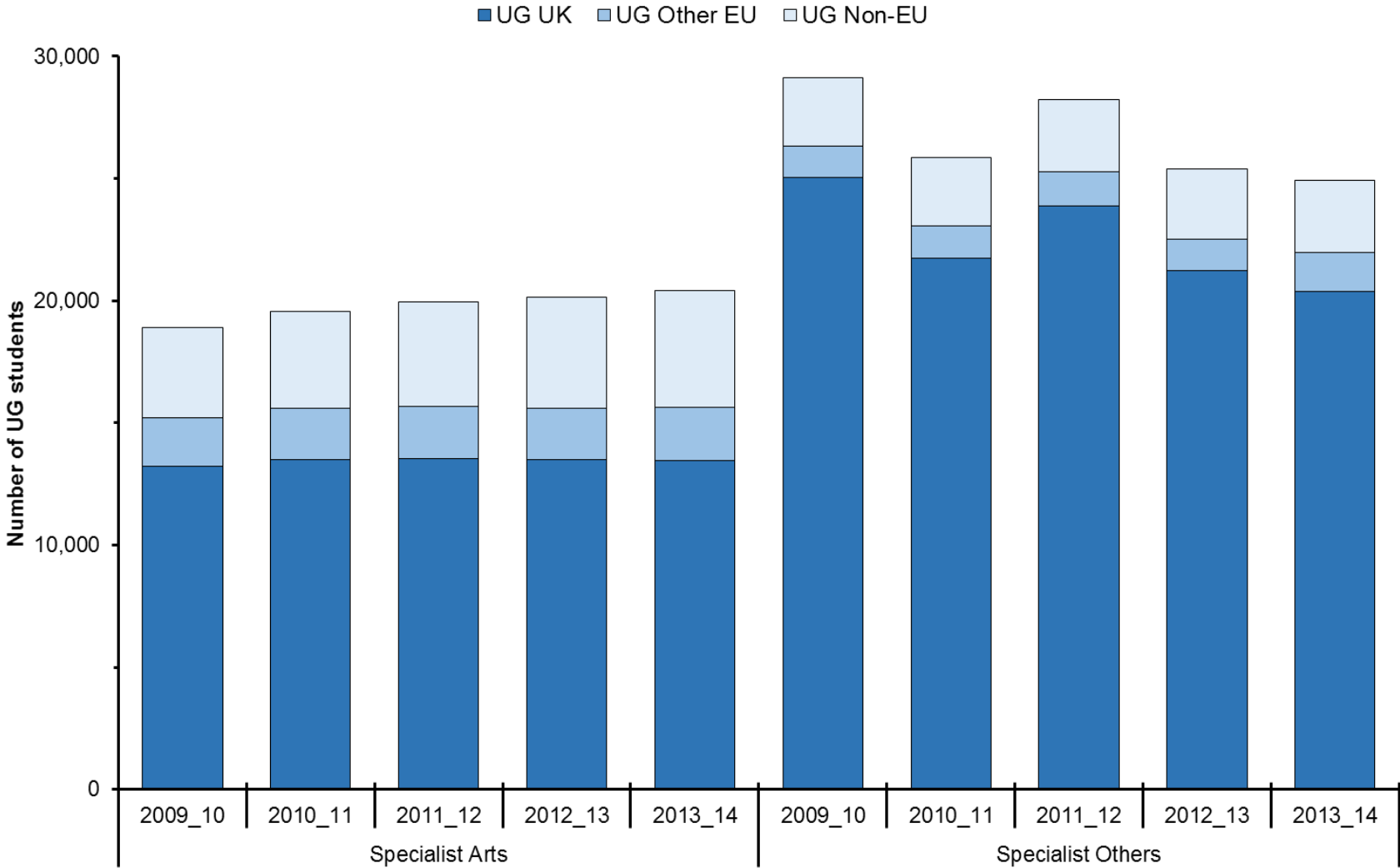
LONDON HIGHER FACTSHEET 2015
HIGHER EDUCATION STUDENTS IN LONDON

UG students in London by domicile



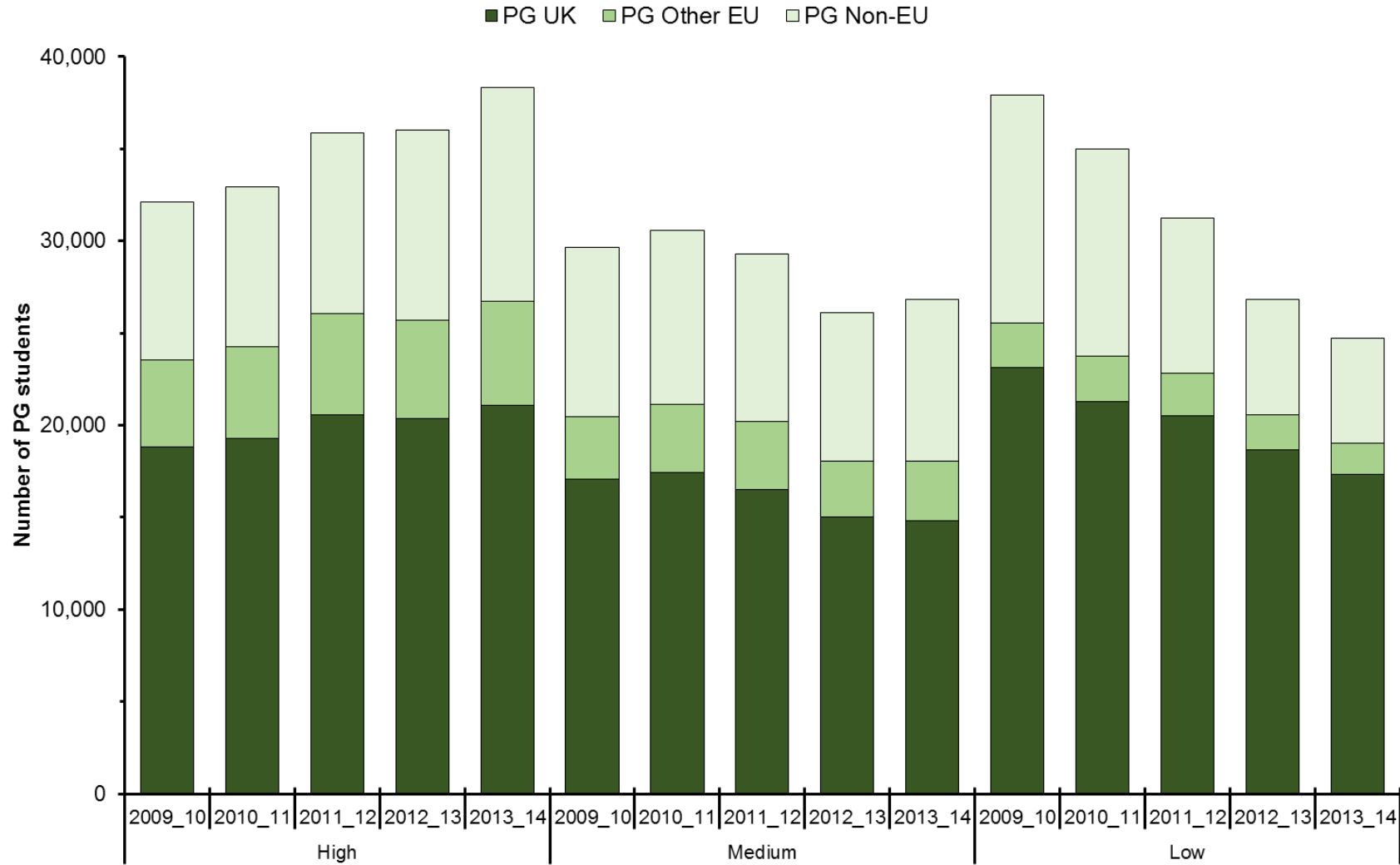
LONDON HIGHER FACTSHEET 2015
HIGHER EDUCATION STUDENTS IN LONDON

UG students in London at specialist HEIs by domicile



LONDON HIGHER FACTSHEET 2015
HIGHER EDUCATION STUDENTS IN LONDON

PG students in London by domicile



LONDON HIGHER FACTSHEET 2015
HIGHER EDUCATION STUDENTS IN LONDON

PG students in London at specialist HEIs by domicile

